

Percents over 100%

Connect

Dr Doblal is trying to reduce his electricity use. Last month, he used 350 KWH of electricity, but this month, he only used 85% as much as last month! How many KWH did he use this month?

part

whole 100

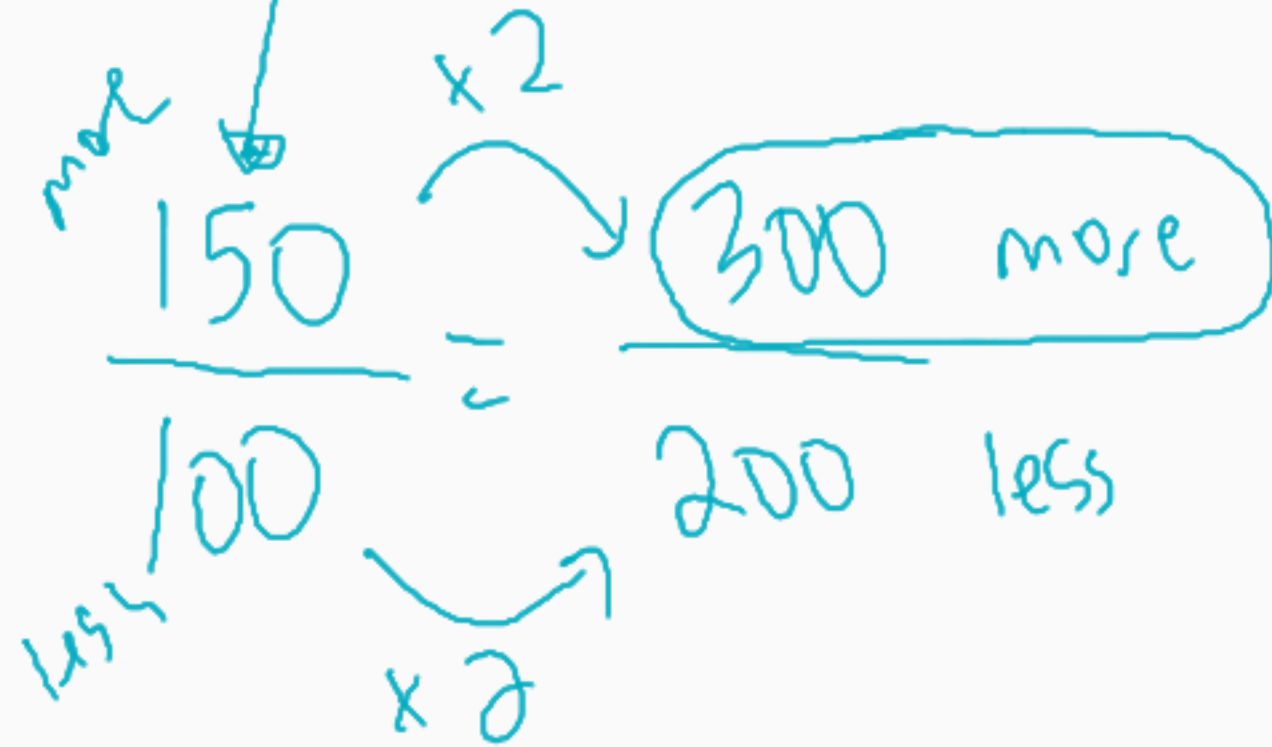
$$\frac{85}{100} = \frac{297.5}{350}$$

Note: The handwritten calculation shows a multiplier of $\times 3.5$ applied to both the numerator (85) and the denominator (100) to reach the result 297.5/350.

I do

Air conditioning is Dr Doblars's #1 electricity expense. When it starts to get hot outside, his electricity bill goes up **FAST**. In the spring, Dr Doblars uses about **200 KWH** of electricity each month, but in the summer, he uses **150%** of that amount. How many KWH does he use in the summer?

part
whole



We Do

In 1990, the United States was releasing 6,500 metric tons of greenhouse gas into the atmosphere each year. Today, it releases 104% of that amount. How many metric tons of greenhouse gas is the United States release each year right now?

9/24/15
out of 100

less

$$\frac{104}{100} = \frac{6,760}{6,500}$$

more $\times 65$ more

4% more

more than whole

1990 - 6500
increase

2020 = 6760

less $\times 65$ less

You do together on whiteboard

A typical new, gasoline-powered car costs about \$25,000. Electric car prices run about 140% of gasoline-powered car prices. How much should a buyer expect to pay for a new electric car?

You do alone on index card

In the 1800's, the average global temperature was about 13.5 degrees Celsius. Today, it is about 105% of that measurement. What is the average global temperature today?